

CASTLE PINES NORTH



METROPOLITAN DISTRICT™



2026 Drinking Water Quality Report

Covering Data For Calendar Year 2025

Public Water System ID: CO0118006

***Esta es información importante.
Si no la pueden leer, necesitan que alguien se la traduzca.***



A Message from the District Manager

On Behalf of the Board of Directors

Dear Castle Pines North Residents,

Castle Pines North Metro District's mission is to provide high-quality and reliable water and wastewater services to our community, now and into the future. To do this, we are working hard to source, treat, test and deliver excellent water, as the following water quality report attests. We encourage you to read this information about the quality of your water and how we comply with state and federal regulatory standards.

Coming out of the hottest and driest winter on record, water is a critical issue for our state. At the District, we are proactively preparing for our system's future needs with key projects, conservation initiatives and an important addition to our team.

Key Projects

Over the last year, we have worked on several projects that address immediate issues and minimize future risks in the long-term. Two of these critical projects continue into 2026: district-wide upgrades to our wastewater lift stations and expansion/updates at our water treatment plant.

Wastewater Lift Station Upgrades – We've begun necessary work to improve the wastewater lift stations that move wastewater through our system to treatment. We're updating six wastewater lift stations and consolidating two others (for seven total stations). This long-overdue project began in early 2026 and will continue through 2028 at locations across Castle Pines. It will make our wastewater system much more reliable. Learn more at www.cpnmd.org/wastewater-system-improvements.

Water Treatment Plant Expansion – Since 2021, we have been upgrading almost every part of our treatment plant to improve performance and increase capacity by 2 million gallons. The last component—new filters—are

being added. This summer of 2026, plant updates will finally be complete. We look forward to hosting an open house at our treatment plant to share these important improvements with our customers.

Conservation Efforts

This spring, the board of directors discussed additional ways to promote conservation of our state's limited and precious water resources. While the District is well-prepared to handle drought through our wells and renewable water resources, it is important that we use this water wisely. For this reason, the board asks all our customers to save water however they can, following the three-day-per-week watering schedule, taking advantage of the District's free irrigation evaluation program, applying for irrigation rebates and discounts through our partner Resource Central, swapping turf for native plants, and generally using water-saving best practices. We encourage you to explore all of these at www.cpnmd.org/save-water.

Additional Leadership

As we look to the future, we're also pleased to welcome Deputy District Manager Rene Satin to the team. Rene lives in the Castle Pines community and brings considerable expertise in water and wastewater management. His additional leadership will help the District chart our course through the coming years. See the next page for more about Rene.

Thank you for your continued trust. We are grateful for your understanding as we complete projects across our District area and your support as we work to conserve and plan for the future of Castle Pines.

Nathan Travis, on behalf of the Board



INTRODUCING:

Deputy District Manager Rene Santin

Rene Santin has joined the District to serve the Castle Pines community where he lives. He holds a master’s degree in environmental engineering from Colorado State University and is a licensed Professional Engineer in the State of Colorado. Prior to joining the District, he worked as a consulting engineer supporting utilities across the country in water treatment, system modeling, and infrastructure planning. He is committed to delivering reliable, forward-thinking solutions that support the district’s long-term sustainability. In his free time, Santin enjoys photography and woodworking.



Upgrades In the Works

We are hard at work making important changes to our system! These replacements and repairs will provide reliable water and wastewater for future generations of Castle Pines residents.



Updates to 6 wastewater lift stations (2026-2028), plus consolidating two remaining stations into one (for 7 total).

WHY: To make our wastewater system much more reliable.



Comprehensive updates including replacing filters at our water treatment plant (2021-2026).

WHY: To improve performance and increase capacity by 2 million gallons total to better meet current demand.



Replacing pipelines across our service area (Ongoing).

WHY: To replace smaller, old lines with newer, larger lines that don’t break easily, reducing boil advisories.



System-wide assessment and regional planning studies (Date-2026).

WHY: To identify future district projects and pursue regional collaboration.

Take our Communications Survey

Tell us how well we’re communicating with you. Your feedback on this 10-question survey would really help us.

www.cpnmd.org/take-our-communications-survey



About Castle Pines North Metropolitan District

Castle Pines North Metro District is committed to providing high-quality, dependable drinking water and wastewater services to our community at the lowest possible cost. Making sure you get the water you need every day is what we do.

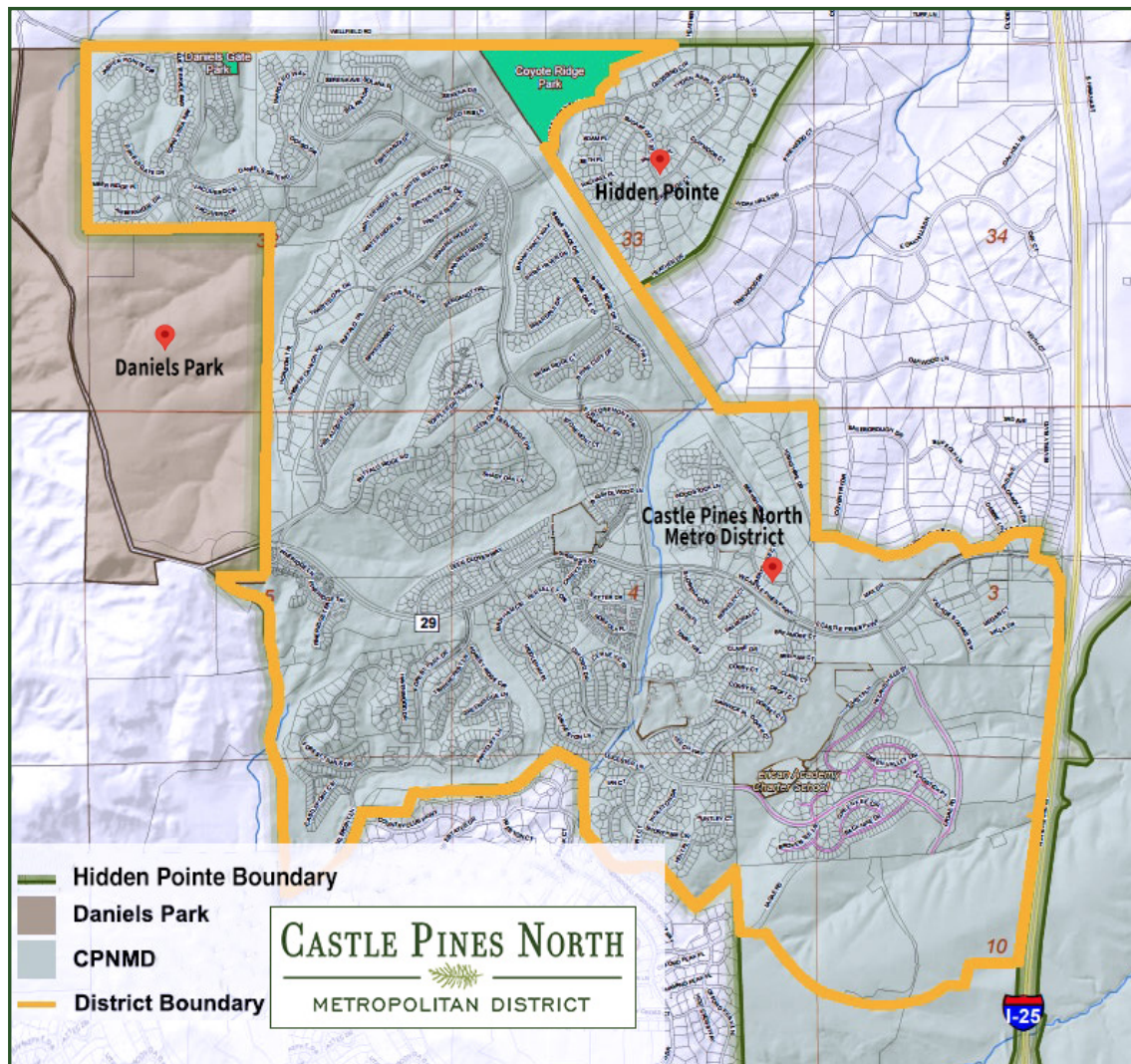
We were established in 1984 as a Title 32 Special District to serve residents of the City of Castle Pines, west of I-25, in Douglas County, Colorado. We provide water & wastewater services to approximately 12,000 residents and additional commercial customers through roughly 4,000 service connections. Our customers include those that live within our boundaries, as well as residents of Hidden Pointe.

We also service Daniels Park, ensuring that the buffalo herd and caretakers have sufficient, safe water. This is done through an agreement with the City and County of Denver.

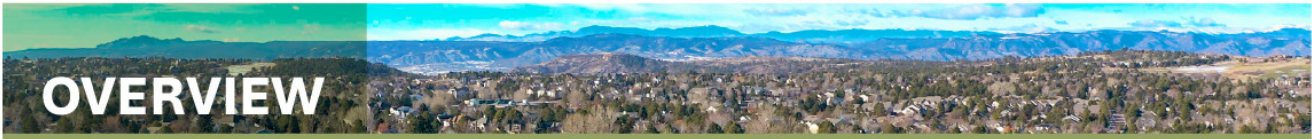
We provide high-quality water to our residents through two sources:

May-September: We use our water wells, drawing from the Arapahoe, Denver, and Lower Dawson Aquifers. This water is treated at our own water treatment facility.

October-April: We take full advantage of our renewable water resources. This is accomplished through an agreement with Highlands Ranch Water. Highlands Ranch treats our stored renewable water in Chatfield Reservoir. We then use our Interconnect Pump Station to deliver their high-quality drinking water directly to our residents. Because of this, we include Highlands Ranch Water's Report in addition to our own. Our wastewater is treated by the Plum Creek Water Reclamation Authority (PCWRA), located south of Castle Rock, discharging into Plum Creek. This facility primarily serves CPNMD, the Town of Castle Rock and Castle Pines Metropolitan District (The Village at Castle Pines). Treated wastewater return flows are captured and used as the primary source of irrigation water for The Ridge Golf Course.



Our System – By the Numbers



OVERVIEW



12,000 residents served by **4,000+** taps across Castle Pines, CO.



5 team members and various subcontractors that serve **24/7** to provide water and wastewater services.



5 ways to stay connected with us: website, text updates, eNewsletter, social channels and public meetings.



WATER



2 primary water sources: well/groundwater in summer and renewable water through Highlands Ranch Water in winter.



Up to **4.5 million** gallons of water treated daily at CPNMD's treatment plant in summer and an average of **700,000** gallons in winter.



24/7 water quality monitoring and **240+** water samples taken per year to ensure water meets state/federal regulations.



3.75 million gallons stored in **3** treated water tanks.



71 miles of water pipeline to deliver water to customers.



80% of treated water used for outdoor irrigation.



WASTEWATER



7 wastewater lift stations to move wastewater to treatment.



58 miles of sewer pipeline to transport wastewater.



600,000+ gallons of wastewater treated daily at Plum Creek Water Reclamation Authority.



400,000 gallons of wastewater reused at the Ridge Golf Club or stored at Chatfield for future use.

2026 Drinking Water Quality Report

Covering Data
For Calendar Year 2025



About This Report

Esta es información importante. Si no la pueden leer, necesitan que alguien se la traduzca.

This annual report is produced each spring and provides essential information about your water supply—where it comes from, how it is treated and tested, and how we comply with the standards established by state and federal regulators.

Attached below this report is another report of water quality data by Highlands Ranch Water, who is our wholesale water system drinking water provider between October-April each year. We work closely with the Colorado Department of Public Health and Environment (CDPHE) to monitor water quality and ensure compliance with all safety standards.

Our Public Water System ID is CO011806.

Have any questions about this report or would like to learn more about your water service?

Please contact Nathan Travis at 303-688-8550 or email us at info@cpnmd.org. We're here to serve you!

We are pleased to present to you this year's water quality report. Our constant goal is to provide you with a safe and dependable supply of drinking water. Please contact NATHAN J TRAVIS at 303-688-8550 with any questions or for public participation opportunities that may affect water quality. **Please see the water quality data from our wholesale system(s) (either attached or included in this report) for additional information about your drinking water.**

General Information

All drinking water, including bottled water, may reasonably be expected to contain at least small amounts of some contaminants. The presence of contaminants does not necessarily indicate that the water poses a health risk. More information about contaminants and potential health effects can be obtained by calling the Environmental Protection Agency's Safe Drinking Water Hotline (1-800-426-4791) or by visiting epa.gov/ground-water-and-drinking-water.

Some people may be more vulnerable to contaminants in drinking water than the general population. Immunocompromised persons such as persons with cancer undergoing chemotherapy, persons who have undergone organ transplants, people with HIV-AIDS or other immune system disorders, some elderly, and infants can be particularly at risk of infections. These people should seek advice about drinking water from

their health care providers. For more information about contaminants and potential health effects, or to receive a copy of the U.S. Environmental Protection Agency (EPA) and the U.S. Centers for Disease Control (CDC) guidelines on appropriate means to lessen the risk of infection by *Cryptosporidium* and microbiological contaminants call the EPA Safe Drinking Water Hotline at (1-800-426-4791).

Contaminant Information

The sources of drinking water (both tap water and bottled water) include rivers, lakes, streams, ponds, reservoirs, springs, and wells. As water travels over the surface of the land or through the ground, it dissolves naturally occurring minerals and, in some cases, radioactive material, and can pick up substances resulting from the presence of animals or from human activity. Contaminants that may be present in source water include:

- **Microbial contaminants:** viruses and bacteria that may come from sewage treatment plants, septic systems, agricultural livestock operations, and wildlife.
- **Inorganic contaminants:** salts and metals, which can be naturally-occurring or result from urban storm water runoff, industrial or domestic wastewater discharges, oil and gas production, mining, or farming.
- **Pesticides and herbicides:** may come from a variety of sources, such as agriculture, urban storm water runoff, and residential uses.
- **Radioactive contaminants:** can be naturally occurring or be the result of oil and gas production and mining activities.
- **Organic chemical contaminants:** including synthetic and volatile organic chemicals, which are byproducts of industrial processes and petroleum production, and also may come from gas stations, urban storm water runoff, and septic systems.

In order to ensure that tap water is safe to drink, the Colorado Department of Public Health and Environment prescribes regulations limiting the amount of certain contaminants in water provided by public water systems. The Food and Drug Administration regulations establish limits for contaminants in bottled water that must provide the same protection for public health.

Lead in Drinking Water



Lead can cause serious health effects in people of all ages, especially pregnant people, infants (both formula-fed and breastfed), and young children. Lead in drinking water is primarily from materials and parts used in service lines and in home plumbing. We are responsible for providing high quality drinking water and removing lead pipes but cannot control the variety of materials used in the plumbing in your home. Because lead levels may vary over time, lead exposure is possible even when your tap sampling results do not detect lead at one point in time.

You can help protect yourself and your family by identifying and removing lead materials within your home plumbing and taking steps to reduce your family's risk. Using a filter, certified by an American National Standards Institute accredited certifier to reduce lead, is effective in reducing lead exposures. Follow the instructions provided with the filter to ensure the filter is used properly.

Use only cold water for drinking, cooking, and making baby formula. Boiling water does not remove lead from water. Before using tap water for drinking, cooking, or making baby formula, flush your pipes for several minutes. You can do this by running your tap, taking a shower, doing laundry or a load of dishes. If you have a lead service line or galvanized requiring replacement service line, you may need to flush your pipes for a longer period. If you are concerned about lead in your water and wish to have your water tested, contact NATHAN J TRAVIS at 303-688-8550. Information on lead in drinking water, testing methods, and steps you can take to minimize exposure is available at epa.gov/safewater/lead.

Potential Source(s) of Contamination

Above ground, underground, and leaking storage tank sites

- Low intensity residential
- Urban recreational grasses
- Fallow
- Evergreen forest
- Septic systems
- Road miles
- Other facilities

Service Line Inventory

New state and federal laws require us to inventory all water service lines in our service area to classify the material. A service line is the underground pipe that carries water from the water main, likely in the street, into your home or building. If you would like to view a copy of our service line inventory or have questions about the material of your service line, contact NATHAN J TRAVIS at 303-688-8550.



Source Water Assessment and Protection (SWAP)

The Colorado Department of Public Health and Environment may have provided us with a Source Water Assessment Report for our water supply. For general information or to obtain a copy of the report please visit wqcdcompliance.com/ccr. The report is located under “Guidance: Source Water Assessment Reports”. Search the table using our system name or ID, or by contacting NATHAN J TRAVIS at 303-688-8550.

The Source Water Assessment Report provides a screening-level evaluation of potential contamination that **could** occur. It **does not** mean that the contamination **has or will** occur. We can use this information to evaluate the need to improve our current water treatment capabilities and prepare for future contamination threats. This can help

us ensure that quality finished water is delivered to your homes. In addition, the source water assessment results provide a starting point for developing a source water protection plan. Potential sources of contamination in our source water area are listed below.

Please contact us to learn more about what you can do to help protect your drinking water sources, any questions about the Drinking Water Quality Report, to learn more about our system, or to attend scheduled public meetings. We want you, our valued customers, to be informed about the services we provide and the quality water we deliver to you every day. Our groundwater drinking water sources, if any, are located in DOUGLAS county near our water system.

Our Water Sources

Sources (Water Type - Source Type)

| | |
|--|--------------------------------------|
| A7 WELL (Groundwater-Well) | PURCHASED FROM CASTLE PINES VILLAGE |
| DE7 WELL (Groundwater-Well) | (Groundwater-Consecutive Connection) |
| A6 WELL (Groundwater-Well) | A1 WELL (Groundwater-Well) |
| DE6 WELL (Groundwater-Well) | A2 WELL (Groundwater-Well) |
| A5 WELL (Groundwater-Well) | A3 WELL (Groundwater-Well) |
| PURCHASED WATER FROM CO0118015 | A4 WELL (Groundwater-Well) |
| (Surface Water-Consecutive Connection) | LDA1 WELL (Groundwater-Well) |

Potential Source(s) of Contamination

Aboveground, Underground and Leaking Storage Tank Sites, Other Facilities, Low Intensity Residential, Urban Recreational Grasses, Fallow, Evergreen Forest, Septic Systems, Road Miles



Terms and Abbreviations

- **Maximum Contaminant Level (MCL)** – The highest level of a contaminant allowed in drinking water.
- **Treatment Technique (TT)** – A required process intended to reduce the level of a contaminant in drinking water.
- **Health-Based** – A violation of either a MCL or TT.
- **Non-Health-Based** – A violation that is not a MCL or TT.
- **Action Level (AL)** – The concentration of a contaminant which, if exceeded, triggers treatment and other regulatory requirements.
- **Maximum Residual Disinfectant Level (MRDL)** – The highest level of a disinfectant allowed in drinking water. There is convincing evidence that addition of a disinfectant is necessary for control of microbial contaminants.
- **Maximum Contaminant Level Goal (MCLG)** – The level of a contaminant in drinking water below which there is no known or expected risk to health. MCLGs allow for a margin of safety.
- **Maximum Residual Disinfectant Level Goal (MRDLG)** – The level of a drinking water disinfectant, below which there is no known or expected risk to health. MRDLGs do not reflect the benefits of the use of disinfectants to control microbial contaminants.
- **Violation (No Abbreviation)** – Failure to meet a Colorado Primary Drinking Water Regulation.
- **Formal Enforcement Action (No Abbreviation)** – Escalated action taken by the State (due to the risk to public health, or number or severity of violations) to bring a non-compliant water system back into compliance.
- **Variance and Exemptions (V/E)** – Department permission not to meet a MCL or treatment technique under certain conditions.
- **Gross Alpha (No Abbreviation)** – Gross alpha particle activity compliance value. It includes radium-226, but excludes radon 222, and uranium.
- **Picocuries per liter (pCi/L)** – Measure of the radioactivity in water.
- **Nephelometric Turbidity Unit (NTU)** – Measure of the clarity or cloudiness of water. Turbidity in excess of 5 NTU is just noticeable to the typical person.
- **Compliance Value (No Abbreviation)** – Single or calculated value used to determine if regulatory contaminant level (e.g. MCL) is met. Examples of calculated values are the 90th Percentile, Running Annual Average (RAA) and Locational Running Annual Average (LRAA).
- **Average (x-bar)** – Typical value.
- **Range (R)** – Lowest value to the highest value.
- **Sample Size (n)** – Number or count of values (i.e. number of water samples collected).
- **Parts per million = Milligrams per liter (ppm = mg/L)** – One part per million corresponds to one minute in two years or a single penny in \$10,000.
- **Parts per billion = Micrograms per liter (ppb = ug/L)** – One part per billion corresponds to one minute in 2,000 years, or a single penny in \$10,000,000.
- **Not Applicable (N/A)** – Does not apply or not available.
- **Level 1 Assessment** – A study of the water system to identify potential problems and determine (if possible) why total coliform bacteria have been found in our water system.
- **Level 2 Assessment** – A very detailed study of the water system to identify potential problems and determine (if possible) why an E. coli MCL violation has occurred and/or why total coliform bacteria have been found in our water system on multiple occasions.



2025 Water Quality Test Results

CASTLE PINES NORTH MD routinely monitors for contaminants in your drinking water according to Federal and State laws. The following table(s) show all detections found in the period of January 1 to December 31, 2025 unless otherwise noted. The State of Colorado requires us to monitor for certain contaminants less than once per year because the concentrations of these contaminants are not expected to vary significantly from year to year,

or the system is not considered vulnerable to this type of contamination. Therefore, some of our data, though representative, may be more than one-year-old.

Note: Only detected contaminants sampled within the last 5 years appear in this report. If no tables appear in this section, then no contaminants were detected in the last round of monitoring.

Disinfectants Sampled in the Distribution System

TT Requirement: At least 95% of samples per period (month or quarter) must be at least 0.2 ppm **OR** If sample size is less than 40 no more than 1 sample is below 0.2 ppm **Typical Sources:** Water additive used to control microbes

| Disinfectant Name | Time Period | Results | Number of Samples Below Level | Sample Size | TT Violation | MRDL |
|-------------------|----------------|--|-------------------------------|-------------|--------------|---------|
| Chloramine | December, 2025 | Lowest period percentage of samples meeting TT requirement: 100% | 0 | 10 | No | 4.0 ppm |

Lead and Copper Sampled in the Distribution System, Lead and Copper Individual Sample Results

| Contaminant Name | Time Period | Tap Sample Range Low – High | 90th Percentile | Sample Size | Unit of Measure | 90th Percentile AL | Sample Sites Above AL | 90th Percentile AL Exceedance | Typical Sources |
|------------------|--------------------------|-----------------------------|-----------------|-------------|-----------------|--------------------|-----------------------|-------------------------------|--|
| Copper | 09/24/2024 to 09/24/2024 | 0 to 0.028 | 0.02 | 20 | ppm | 1.3 | 0 | No | Corrosion of household plumbing systems; Erosion of natural deposits |

Disinfection Byproducts Sampled in the Distribution System

| Name | Year | Average | Range Low – High | Sample Size | Unit of Measure | MCL | MCLG | MCL Violation | Typical Sources |
|-------------------------------|------|---------|------------------|-------------|-----------------|-----|------|---------------|--|
| Total Haloacetic Acids (HAA5) | 2025 | 3.1 | 0 to 6.19 | 2 | ppb | 60 | N/A | No | Byproduct of drinking water disinfection |
| Total Trihalomethanes (TTHM) | 2025 | 5.84 | 0 to 11.67 | 2 | ppb | 80 | N/A | No | Byproduct of drinking water disinfection |

Radionuclides Sampled at the Entry Point to the Distribution System

| Contaminant Name | Year | Average | Range Low – High | Sample Size | Unit of Measure | MCL | MCLG | MCL Violation | Typical Sources |
|------------------|------|---------|------------------|-------------|-----------------|-----|------|---------------|-----------------------------|
| Gross Alpha | 2025 | 4.1 | 4.1 to 4.1 | 1 | pCi/L | 15 | 0 | No | Erosion of natural deposits |
| Combined Radium | 2025 | 2.4 | 2.4 to 2.4 | 1 | pCi/L | 5 | 0 | No | Erosion of natural deposits |

Inorganic Contaminants Sampled at the Entry Point to the Distribution System

| Contaminant Name | Year | Average | Range Low – High | Sample Size | Unit of Measure | MCL | MCLG | MCL Violation | Typical Sources |
|------------------|------|---------|------------------|-------------|-----------------|-----|------|---------------|--|
| Barium | 2021 | 0.1 | 0.1 to 0.1 | 1 | ppm | 2 | 2 | No | Discharge of drilling wastes; discharge from metal refineries; erosion of natural deposits |
| Chromium | 2021 | 2 | 2 to 2 | 1 | ppb | 100 | 100 | No | Discharge from steel and pulp mills; erosion of natural deposits |

Secondary Contaminants

Secondary standards are non-enforceable guidelines for contaminants that may cause cosmetic effects (such as skin, or tooth discoloration) or aesthetic effects (such as taste, odor, or color) in drinking water

| Contaminant Name | Year | Average | Range Low – High | Sample Size | Unit of Measure | Secondary Standard |
|------------------|------|---------|------------------|-------------|-----------------|--------------------|
| Sodium | 2021 | 18.2 | 18.2 to 18.2 | 1 | ppm | N/A |

Unregulated Contaminants

No Violations, Significant Deficiencies, or Formal Enforcement Actions

EPA has implemented the Unregulated Contaminant Monitoring Rule (UCMR) to collect data for contaminants that are suspected to be present in drinking water and do not have health-based standards set under the Safe Drinking Water Act. EPA uses the results of UCMR monitoring to learn about the occurrence of unregulated contaminants in drinking water and to decide whether or not these contaminants will be regulated in the future.

We performed monitoring and reported the analytical results of the monitoring to EPA in accordance with its Unregulated Contaminant Monitoring Rule (UCMR). Once EPA reviews the submitted results, the results are made available in the EPA's National Contaminant Occurrence

Database (NCOD) (epa.gov/dwucmr/national-contaminant-occurrence-database-ncod) Consumers can review UCMR results by accessing the NCOD.

No contaminants that were detected during our UCMR sampling. More information about the contaminants that were included in UCMR monitoring can be found at: drinktap.org/Water-Info/Whats-in-My-Water/Unregulated-Contaminant-Monitoring-Rule-UCMR. Learn more about the EPA UCMR at: epa.gov/dwucmr/learn-about-unregulated-contaminant-monitoring-rule or contact the Safe Drinking Water Hotline at (800) 426-4791 or epa.gov/ground-water-and-drinking-water.